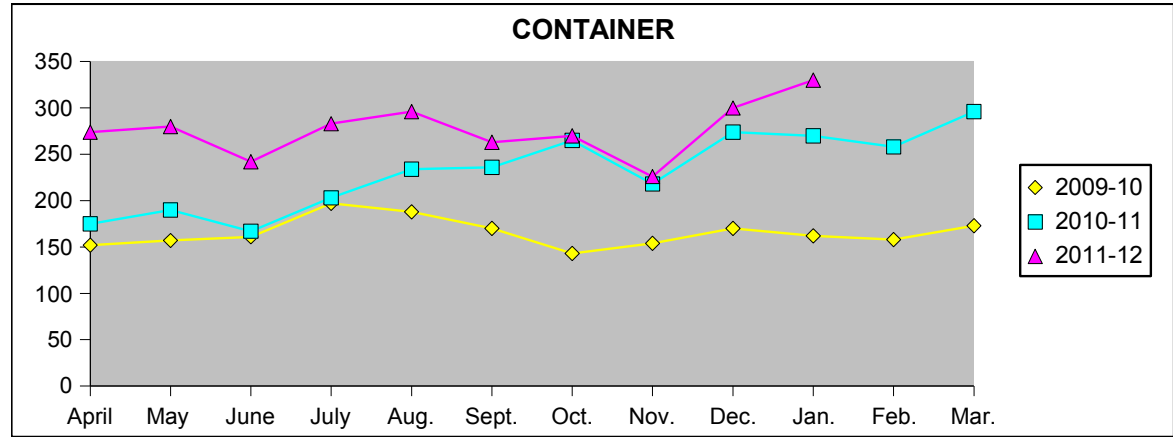
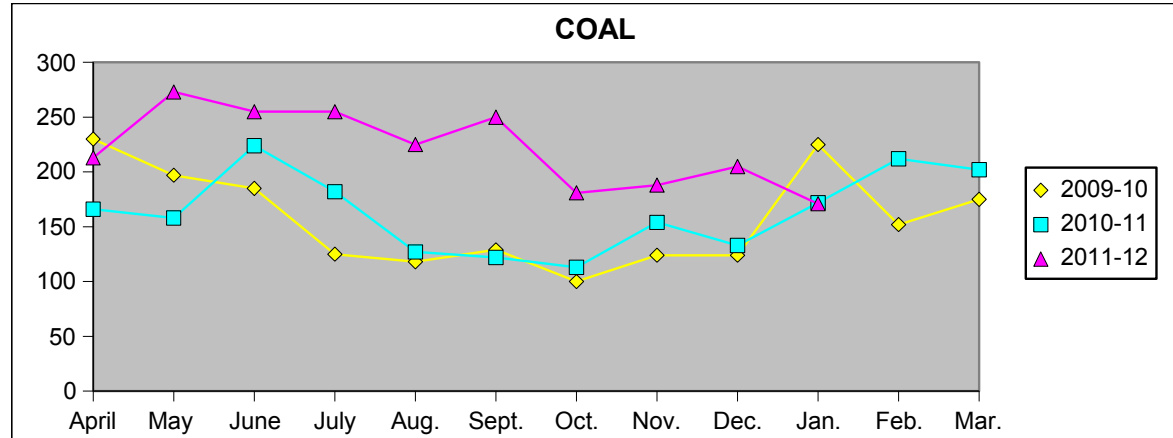


## Commodity wise Freight Trains movement on Kutch Railway

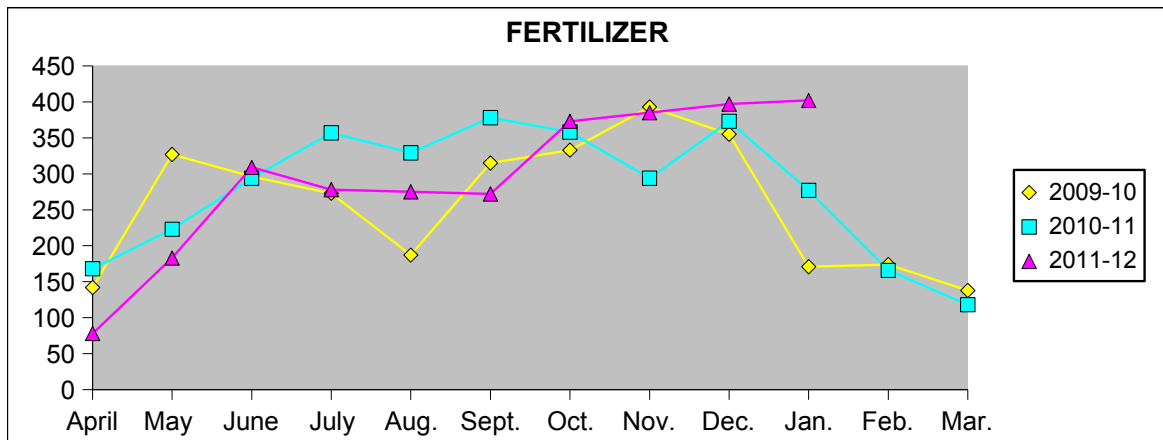
Cont.	2009-10	2010-11	2011-12
April	152	175	274
May	157	190	280
June	161	167	242
July	197	203	283
Aug.	188	234	296
Sept.	170	236	263
Oct.	143	265	270
Nov.	154	218	226
Dec.	170	274	300
Jan.	162	270	330
Feb.	158	258	
Mar.	173	296	
<b>Total</b>	<b>1985</b>	<b>2786</b>	<b>2764</b>



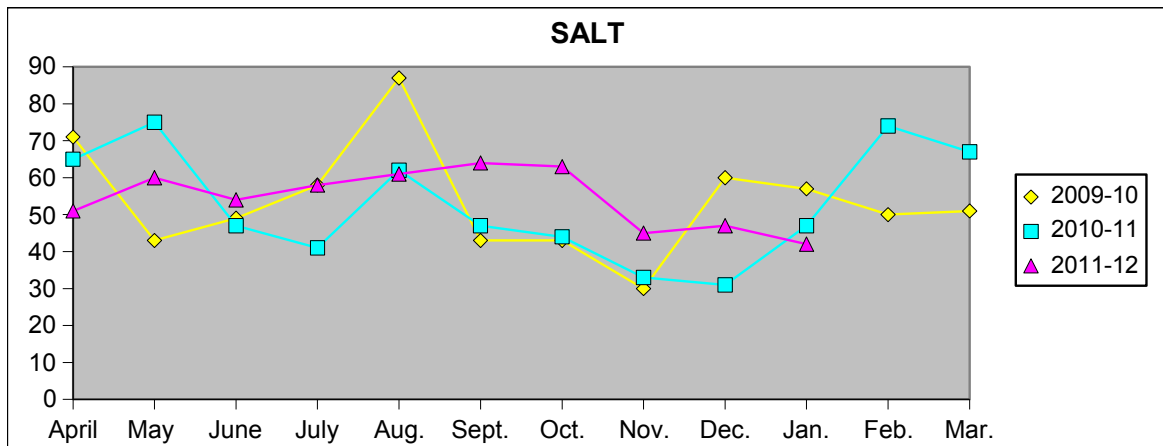
Coal	2009-10	2010-11	2011-12
April	230	166	213
May	197	158	273
June	185	224	255
July	125	182	255
Aug.	118	127	225
Sept.	129	122	250
Oct.	100	113	181
Nov.	124	154	188
Dec.	124	133	205
Jan.	225	172	171
Feb.	152	212	
Mar.	175	202	
<b>Total</b>	<b>1884</b>	<b>1965</b>	<b>2216</b>



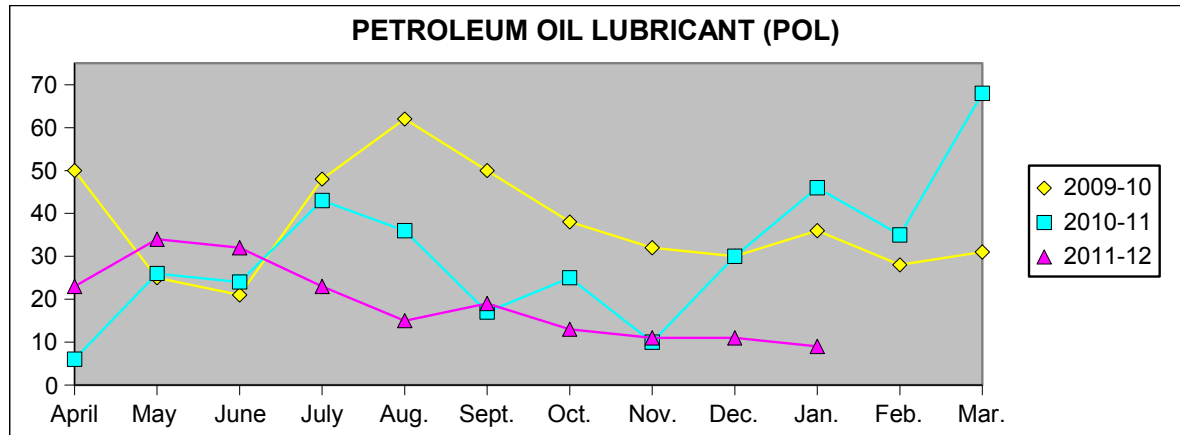
Ferti.	2009-10	2010-11	2011-12
April	142	168	78
May	327	223	183
June	296	294	309
July	273	357	278
Aug.	187	329	275
Sept.	315	378	272
Oct.	333	358	373
Nov.	393	294	385
Dec.	355	373	397
Jan.	171	277	402
Feb.	174	166	
Mar.	138	118	
<b>Total</b>	<b>3104</b>	<b>3335</b>	<b>2952</b>



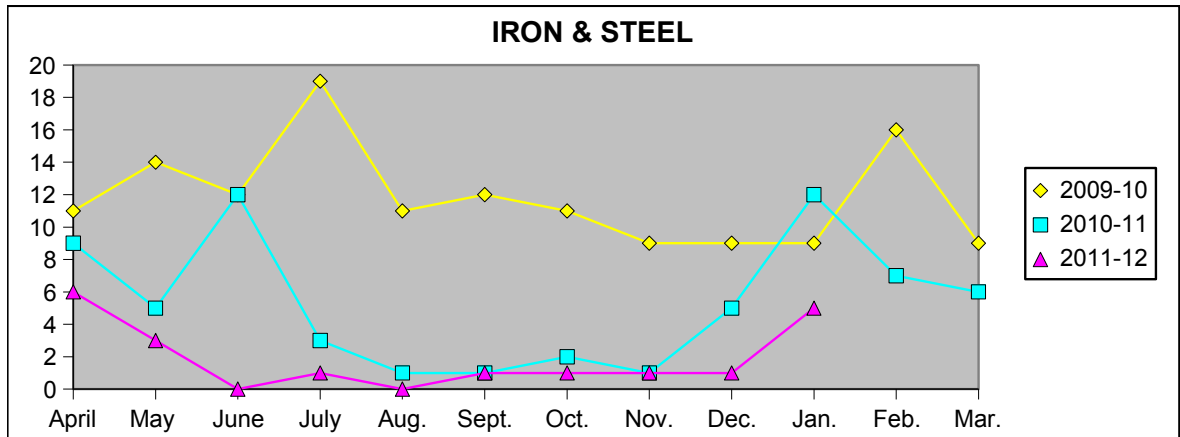
Salt	2009-10	2010-11	2011-12
April	71	65	51
May	43	75	60
June	49	47	54
July	58	41	58
Aug.	87	62	61
Sept.	43	47	64
Oct.	43	44	63
Nov.	30	33	45
Dec.	60	31	47
Jan.	57	47	42
Feb.	50	74	
Mar.	51	67	
<b>Total</b>	<b>642</b>	<b>633</b>	<b>545</b>



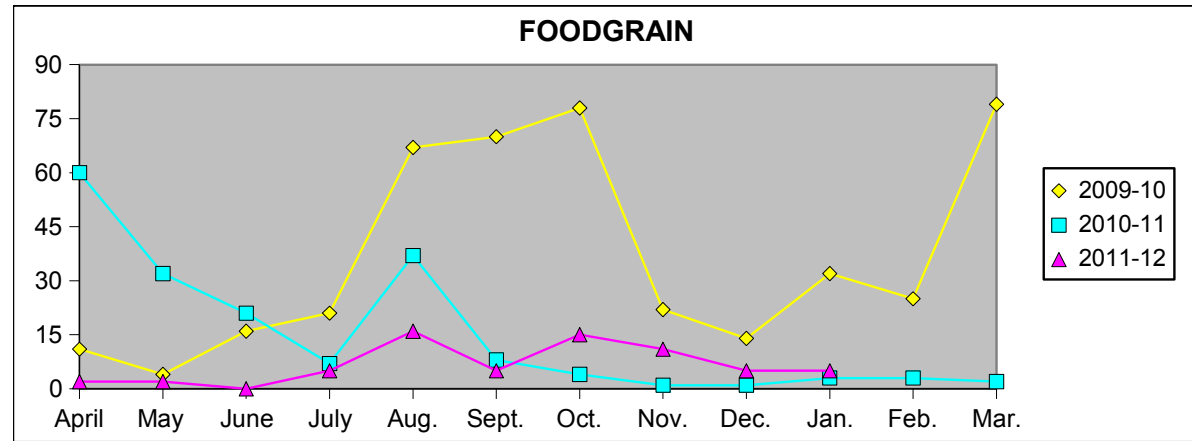
POL	2009-10	2010-11	2011-12
April	50	6	23
May	25	26	34
June	21	24	32
July	48	43	23
Aug.	62	36	15
Sept.	50	17	19
Oct.	38	25	13
Nov.	32	10	11
Dec.	30	30	11
Jan.	36	46	9
Feb.	28	35	
Mar.	31	68	
<b>Total</b>	<b>451</b>	<b>366</b>	<b>190</b>



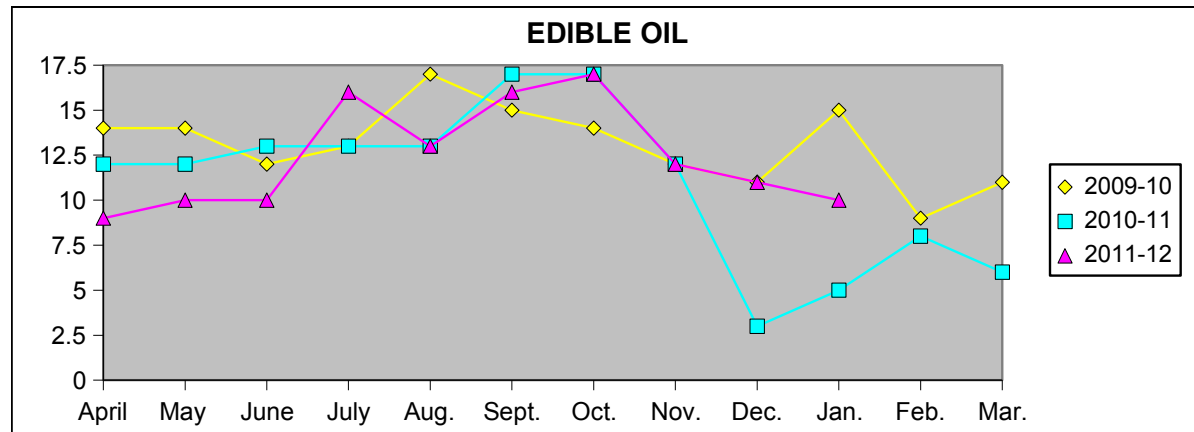
I & S	2009-10	2010-11	2011-12
April	11	9	6
May	14	5	3
June	12	12	0
July	19	3	1
Aug.	11	1	0
Sept.	12	1	1
Oct.	11	2	1
Nov.	9	1	1
Dec.	9	5	1
Jan.	9	12	5
Feb.	16	7	
Mar.	9	6	
<b>Total</b>	<b>142</b>	<b>64</b>	<b>19</b>



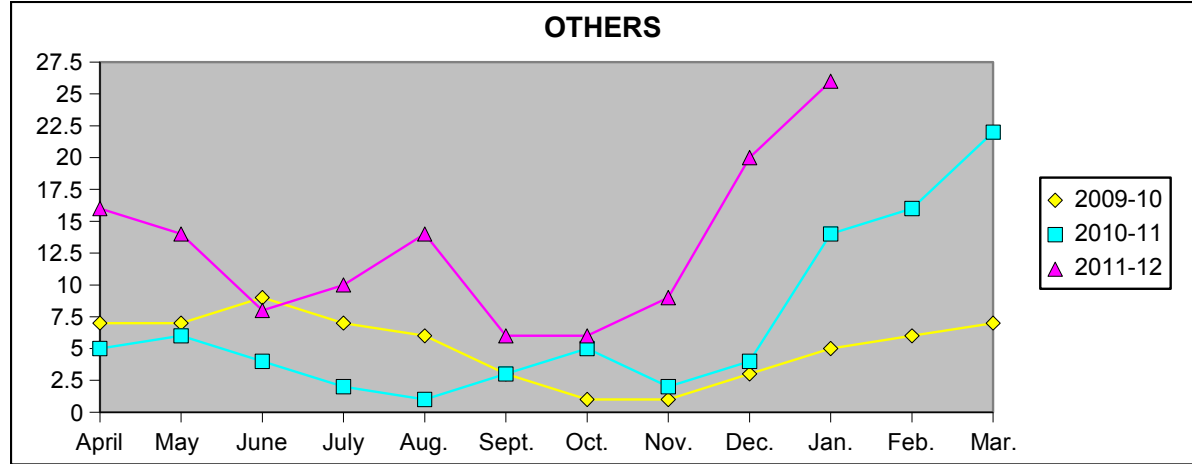
FG	2009-10	2010-11	2011-12
April	11	60	2
May	4	32	2
June	16	21	0
July	21	7	5
Aug.	67	37	16
Sept.	70	8	5
Oct.	78	4	15
Nov.	22	1	11
Dec.	14	1	5
Jan.	32	3	5
Feb.	25	3	
Mar.	79	2	
<b>Total</b>	<b>439</b>	<b>179</b>	<b>66</b>



E.Oil	2009-10	2010-11	2011-12
April	14	12	9
May	14	12	10
June	12	13	10
July	13	13	16
Aug.	17	13	13
Sept.	15	17	16
Oct.	14	17	17
Nov.	12	12	12
Dec.	11	3	11
Jan.	15	5	10
Feb.	9	8	
Mar.	11	6	
<b>Total</b>	<b>157</b>	<b>131</b>	<b>124</b>



Others	2009-10	2010-11	2011-12
April	7	5	16
May	7	6	14
June	9	4	8
July	7	2	10
Aug.	6	1	14
Sept.	3	3	6
Oct.	1	5	6
Nov.	1	2	9
Dec.	3	4	20
Jan.	5	14	26
Feb.	6	16	
Mar.	7	22	
<b>Total</b>	<b>62</b>	<b>84</b>	<b>129</b>



Empty	2009-10	2010-11	2011-12
April	176	217	190
May	204	200	305
June	228	279	360
July	198	234	360
Aug.	158	244	379
Sept.	141	227	317
Oct.	225	262	359
Nov.	172	290	395
Dec.	174	252	337
Jan.	165	258	406
Feb.	220	240	
Mar.	214	217	
<b>Total</b>	<b>2275</b>	<b>2920</b>	<b>3408</b>

